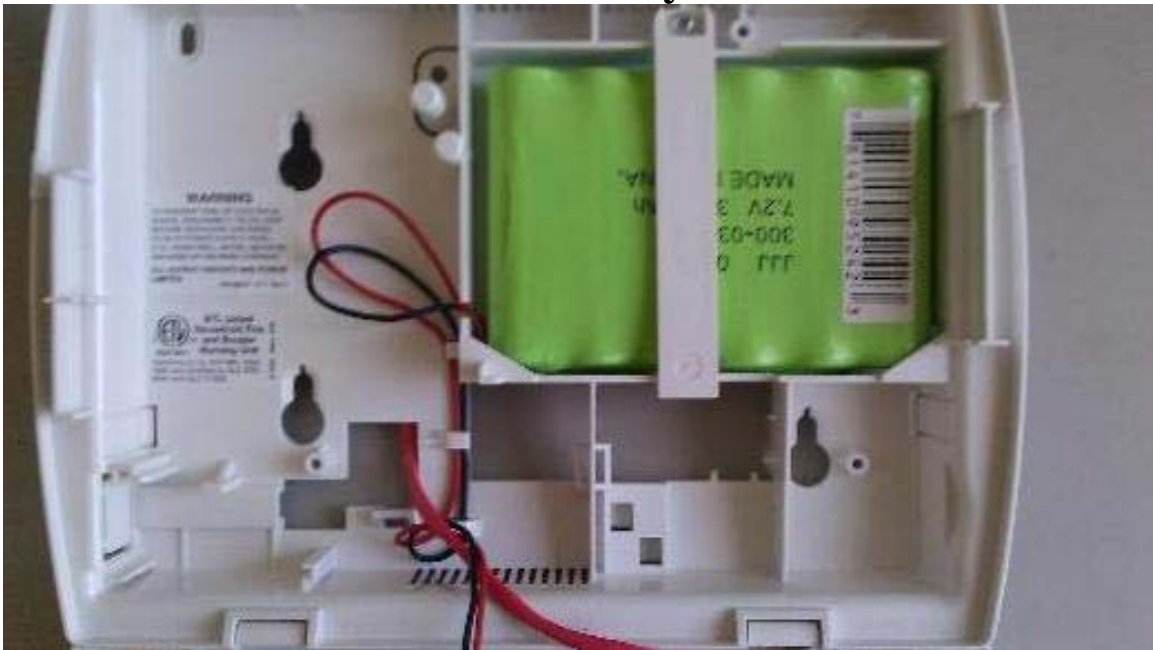


## **HOW TO POWER DOWN A LYNX 5100**

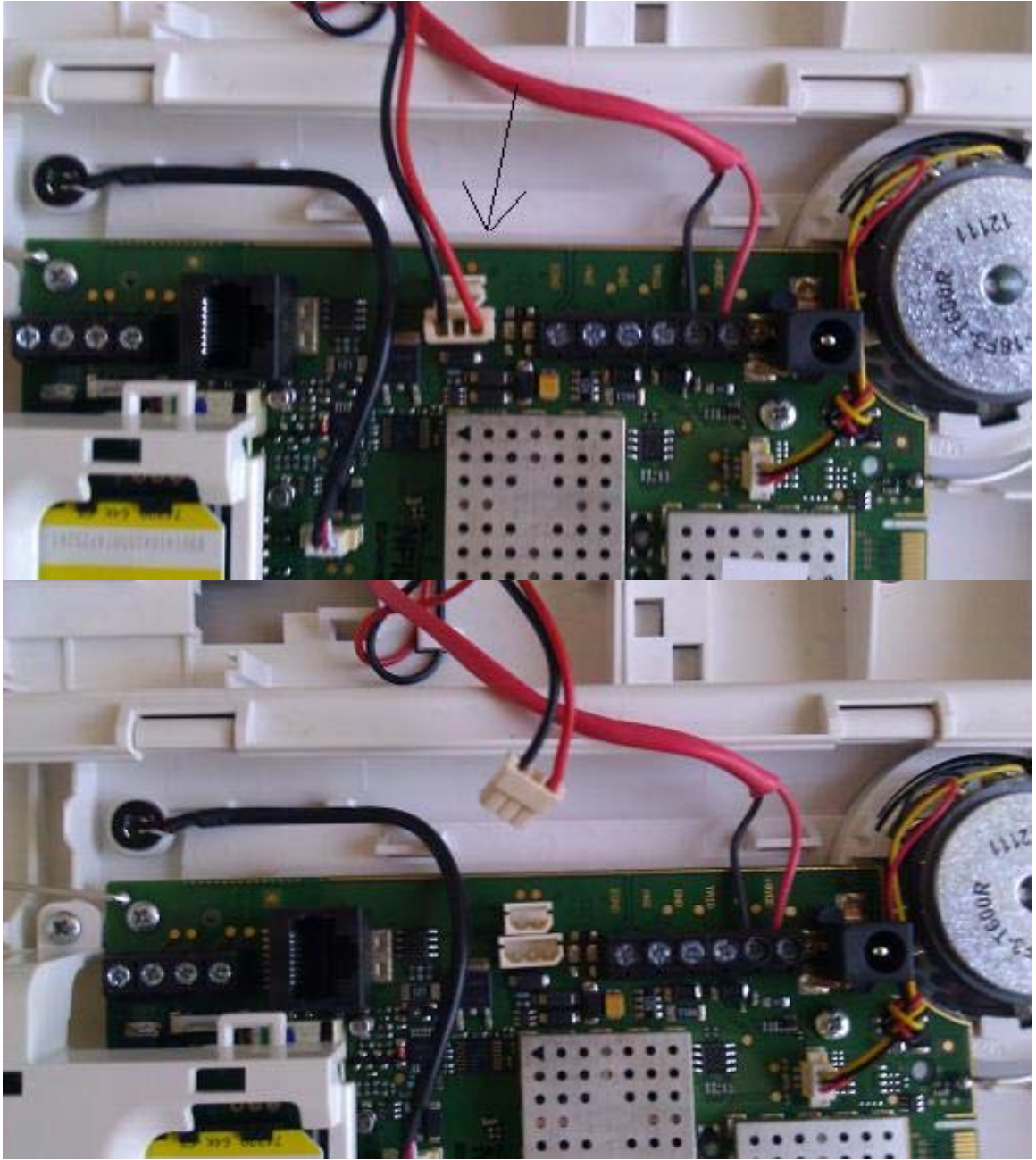
- 1. Locate and unplug the transformer from the wall.**
- 2. On the keypad locate and depress the two tabs until unit hinges open.**



- 3. Locate the battery in unit.**



- 4. Locate and disconnect the battery lead from the mother board by gently unplugging the wire from the terminal on the board**



**The unit should now be powered down.**